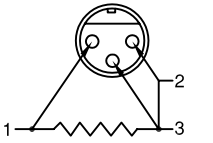
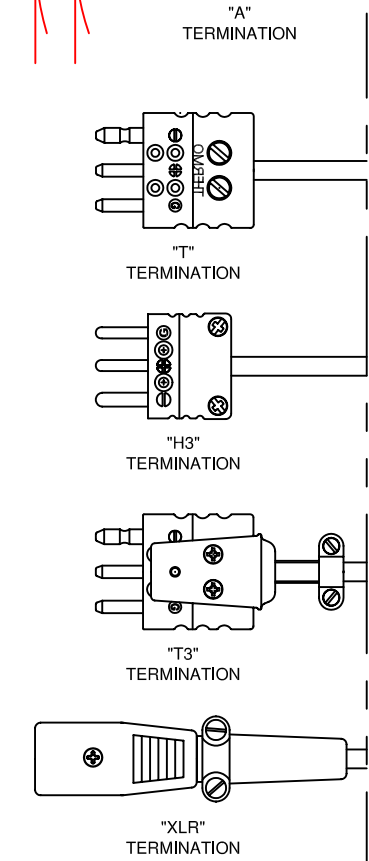
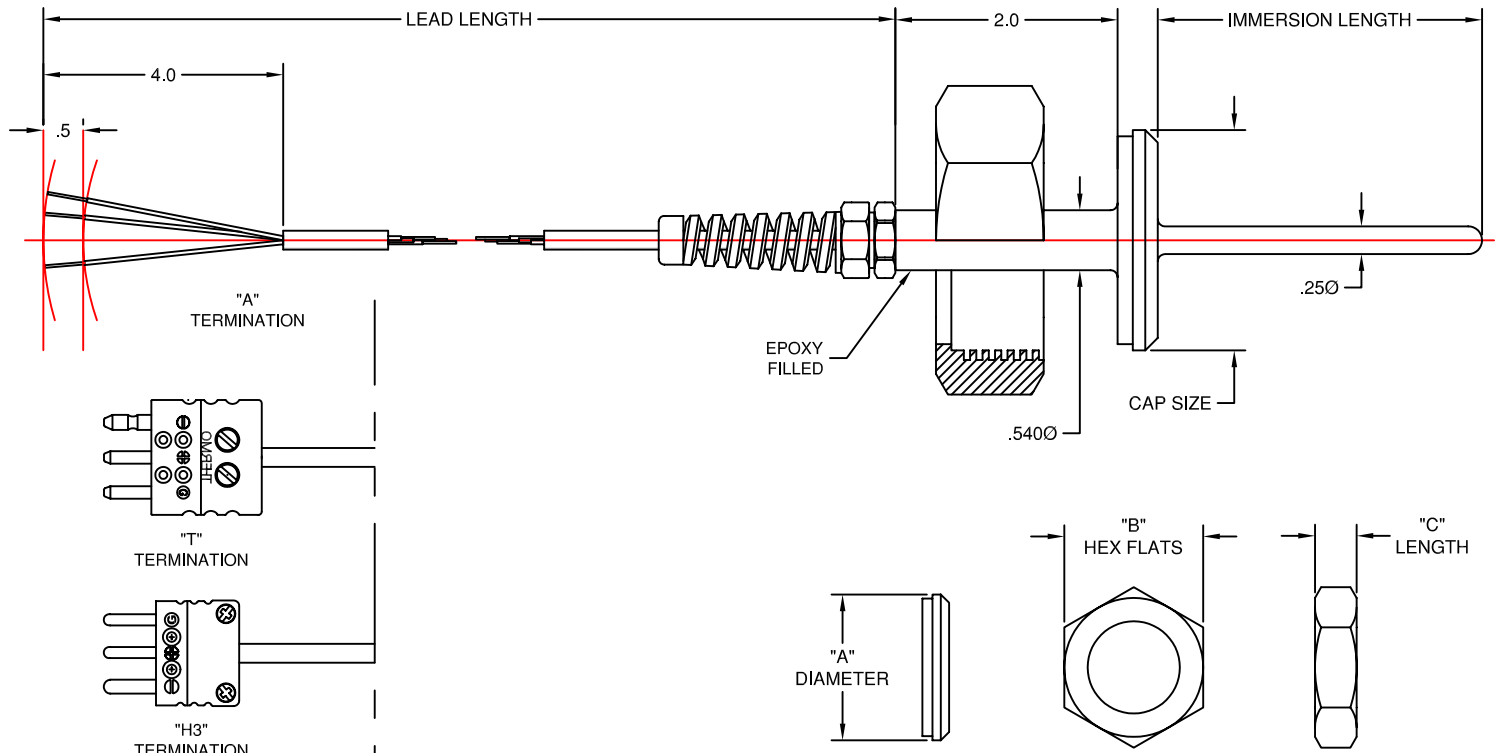


PHARMACEUTICAL & BIOTECH THERMOCOUPLES & RTD'S



WIRING DIAGRAM FOR "XLR" TERMINATION
Mates with ITT Cannon® XLR-3-11C Receptacle

D — CEPCBS — 5L — BSF-.75 — 2.5 — 36 — XLR — CLA

| | |
|------|-----------------------|
| CODE | ACCURACY (ASTM E1137) |
| | CLASS B (LEAVE BLANK) |
| CLA | CLASS A |

| | |
|------|--------------------------------|
| CODE | TERMINATION |
| A | BARE ENDS |
| T | THREE PIN PLUG |
| H3 | MINIATURE THREE PIN PLUG |
| T3 | DUPLEX THREE PIN PLUG |
| XLR | AUDIO "XLR" PLUG (SINGLE ONLY) |

| | |
|------|-------------------------|
| CODE | LEAD LENGTH (IN INCHES) |
|------|-------------------------|

| | |
|------|------------------------------|
| CODE | IMMERSION LENGTH (IN INCHES) |
|------|------------------------------|

| CODE | PROCESS CONNECTION | | | |
|---------|--------------------|--------------|---------------|------------|
| | SIZE | "A" DIAMETER | "B" HEX FLATS | "C" LENGTH |
| BSF-1 | 1" | 1.313" | 1.813" | .906" |
| BSF-1.5 | 1.5" | 1.844" | 2.406" | .969" |
| BSF-2 | 2" | 2.375" | 3" | 1.063" |
| BSF-2.5 | 2.5" | 2.906" | 3.594" | 1.188" |
| BSF-3 | 3" | 3.438" | 4.188" | 1.281" |

| | |
|------|--|
| CODE | STRUCTURE |
| | SINGLE, 3 WIRE, PLATINUM, 100 OHMS @ 0° C., .00385 TCR (LEAVE BLANK) |
| D | DUPLEX, 3 WIRE (6 TOTAL), PLATINUM, 100 OHMS @ 0° C., .00385 TCR |

SPECIFICATIONS
 Material: 316/316L Stainless Steel
 Finish: #4, Ra of 32 µin Max.
 Cap Compliance: 3-A Sanitary Standard
 Temperature Range: -58 to +500° F.
 Strain Relief Cord Grip: Nylon
 Lead Wire:
 Conductor Size: 24 Gauge Stranded
 Conductor Material: Nickel Clad Copper
 Insulation: Teflon(FEP), Red/Red/White
 Jacket: Teflon(FEP), White
Pin Connectors
 Body Material: Glass Filled Thermoplastic
 Polarized Pins
 Spring Loaded Inserts
 Maximum Temperature Limit: 390°F (200°C)
XLR Connectors
 Shell Material: Aluminum Alloy
 Contact Material: Copper Alloy
 Type: Audio, keyed
 Maximum Temperature Limit: 257°F (125°C)

TEMPERATURE MEASUREMENT DESIGNER'S GUIDE
 WWW.THERMO-ELECTRIC-DIRECT.COM

SECTION CEPC

BEVEL SEAT RTD'S with TEFLON(FEP) LEAD WIRE SINGLE & DUPLEX CONSTRUCTION

The information contained hereon shall be considered the sole property of Thermo Electric Company, Inc. The recipient thereof agrees not to disclose or reproduce said information to parties outside the recipient's organization without the written permission of Thermo Electric.
 Doc. No.: TE-CO010109-CEPC-050