

# CONNECTORS

## PHENOLIC CONNECTORS

With bodies machined from phenolic material this connector offers an extremely tough design for heavy stress and/or vibration conditions. The top and bottom surfaces are polished, sides are recessed for easy finger grips. Connector bodies are marked with material designation to identify each pin material and polarity. Connector plugs are supplied with solid pins, jack inserts are heavy gauge "U" for maximum wiper action.

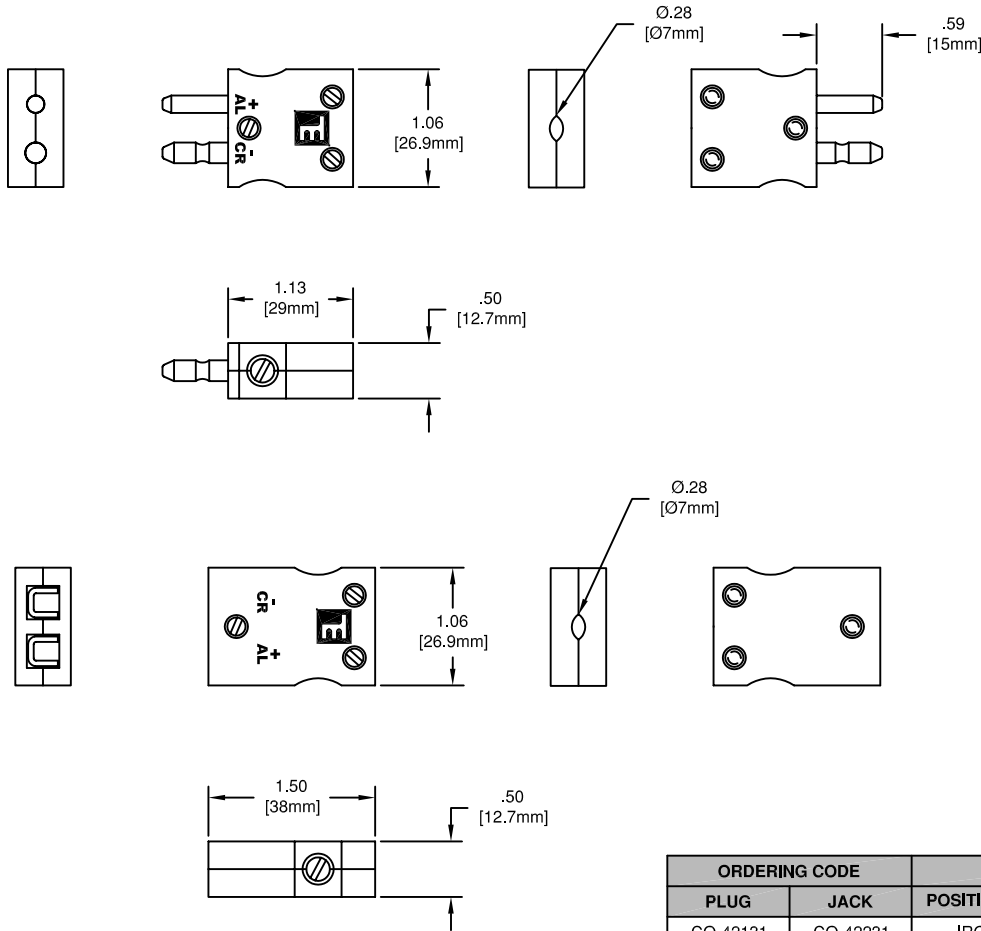
### SPECIFICATIONS

#### CONNECTORS

Identification: Inked Alloy Letter Abbreviation  
 Pin & Insert Material: Thermocouple Alloys  
 Body Material: Machined Phenolic  
 Polarized Pins  
 Spring Loaded Inserts  
 Maximum Temperature Limit: 300°F (150°C)  
 Maximum Wire Diameter: .038" (20Ga)

#### ACCESSORIES

Compression Brackets: Stainless Steel, Brass insert, Includes Mounting Screws  
 Wire Clamp Brackets: Stainless Steel, Includes Mounting Screws



ORDERING CODE		CALIBRATION		SYMBOL	IDENTIFICATION	
PLUG	JACK	POSITIVE (+)	NEGATIVE (-)		POS. (+)	NEG. (-)
CO-42131	CO-42231	IRON	CONSTANTAN	JX	I	C
CO-42132	CO-42232	COPPER	CONSTANTAN	TX	CU	C
CO-42133	CO-42233	COPPER	ALLOY 11	SX/RX	PR	P
CO-42134	CO-42234	CHROMEL	ALUMEL	KX	CR	AL
CO-42136	CO-42236	COPPER	COPPER	BX	CU	CU
CO-42137	CO-42237	CHROMEL	CONSTANTAN	EX	CR	C
(NOT AVAILABLE)		NICROSIL	NISIL	NX		

## ACCESSORIES

