

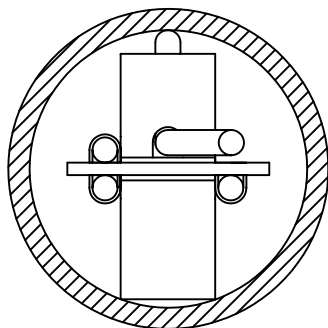
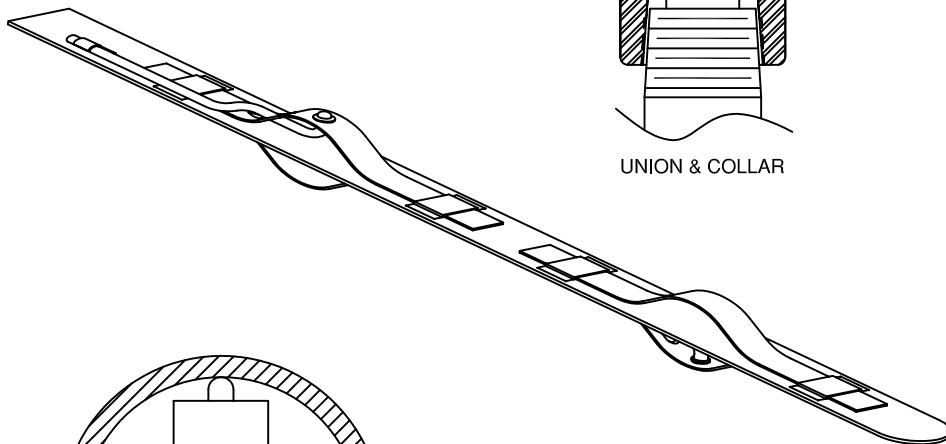
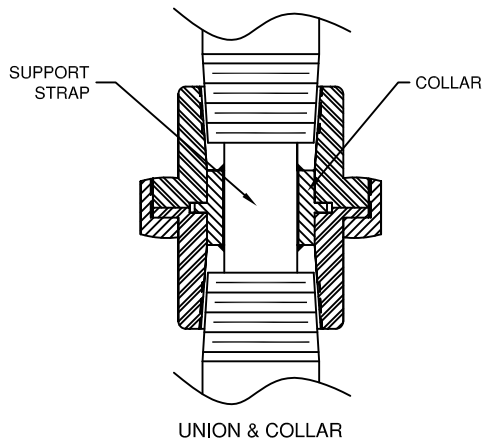
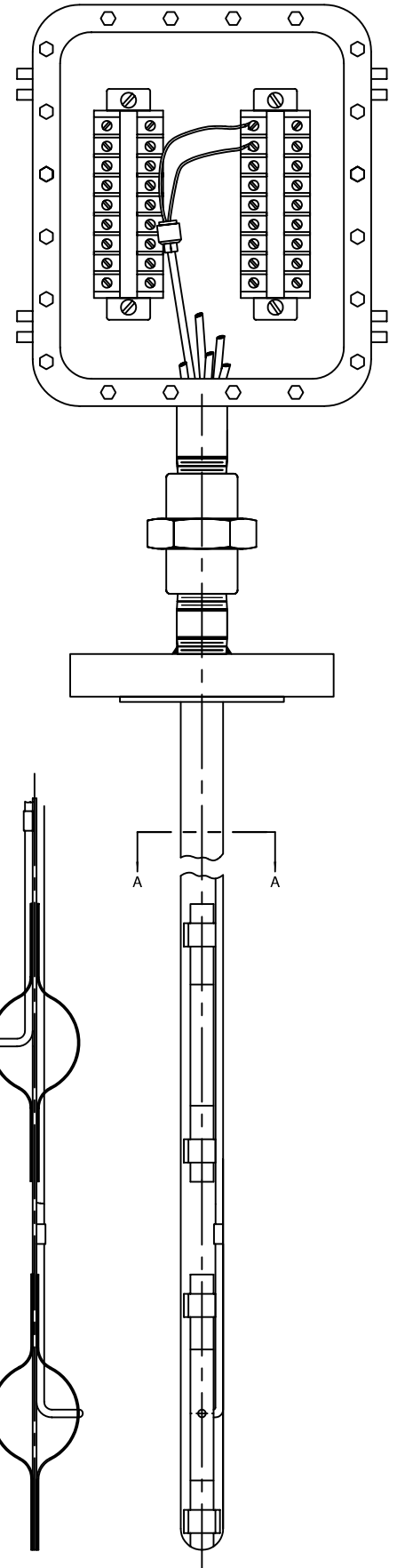
MULTICOUPLES

SPRING LOADED MULTICOUPLES with SUPPORT STRAP The flexibility or coiling capability of this design simplifies installation and shipping. These multicouples are simply uncoiled and guided into a protection tube thereby eliminating complex and costly installation methods usually present in long assemblies. The support strap consists of a stainless steel strip which runs the length of the protection tube. It terminates inside a union fitted with a collar attached to the strap to prevent movement. The sensors are bent and attached to the spring located on the strap. Springs compress for installation and release for constant contact to the inside wall. The spring is made of tempered Inconel for high temperature service. All retaining hardware is stainless steel designed for flexing. Each sensor is factory set at the desired length. Each element is terminated inside the junction box with an epoxy filled transition and stranded lead wire connected to a terminal strip. Terminal strips are numbered to identify each element location.

Protection tubes are fabricated from pipe in a number of sizes and can be welded together for lengths of greater than twenty feet. These multicouples can be supplied with protection tubes or with any threaded or flange connection for mating to vessel fabricators design.

Junction boxes are available in sheet steel, stainless steel, fiberglass, cast iron, cast aluminum for indoor, outdoor or hazardous locations. Tube and conduit openings can be located to suit site installation.

Terminal strips are available in thermocouple alloy or modular type. Factory set and installed rail mounted transmitters or averaging circuitry can be installed in place of terminal strips.



SECTION A-A



TEMPERATURE MEASUREMENT DESIGNER'S GUIDE
WWW.THERMO-ELECTRIC-DIRECT.COM

SECTION MULT
SPRING LOADED
with SUPPORT STRAP

The information contained hereon shall be considered the sole property of Thermo Electric Company, Inc. The recipient thereof agrees not to disclose or reproduce said information to parties outside the recipient's organization without the written permission of Thermo Electric.

Doc. No.: TE-CO010109-MULT-030